
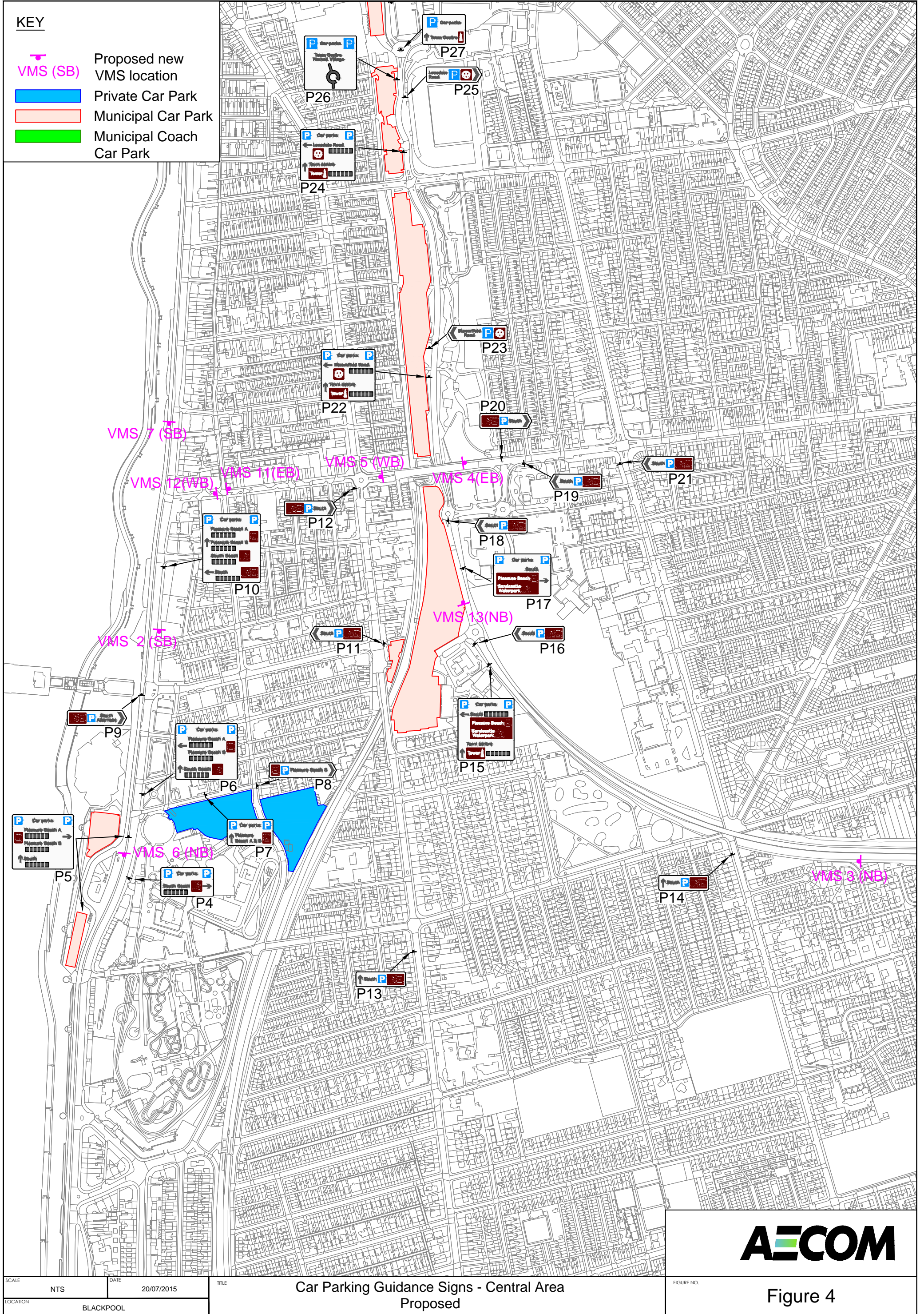
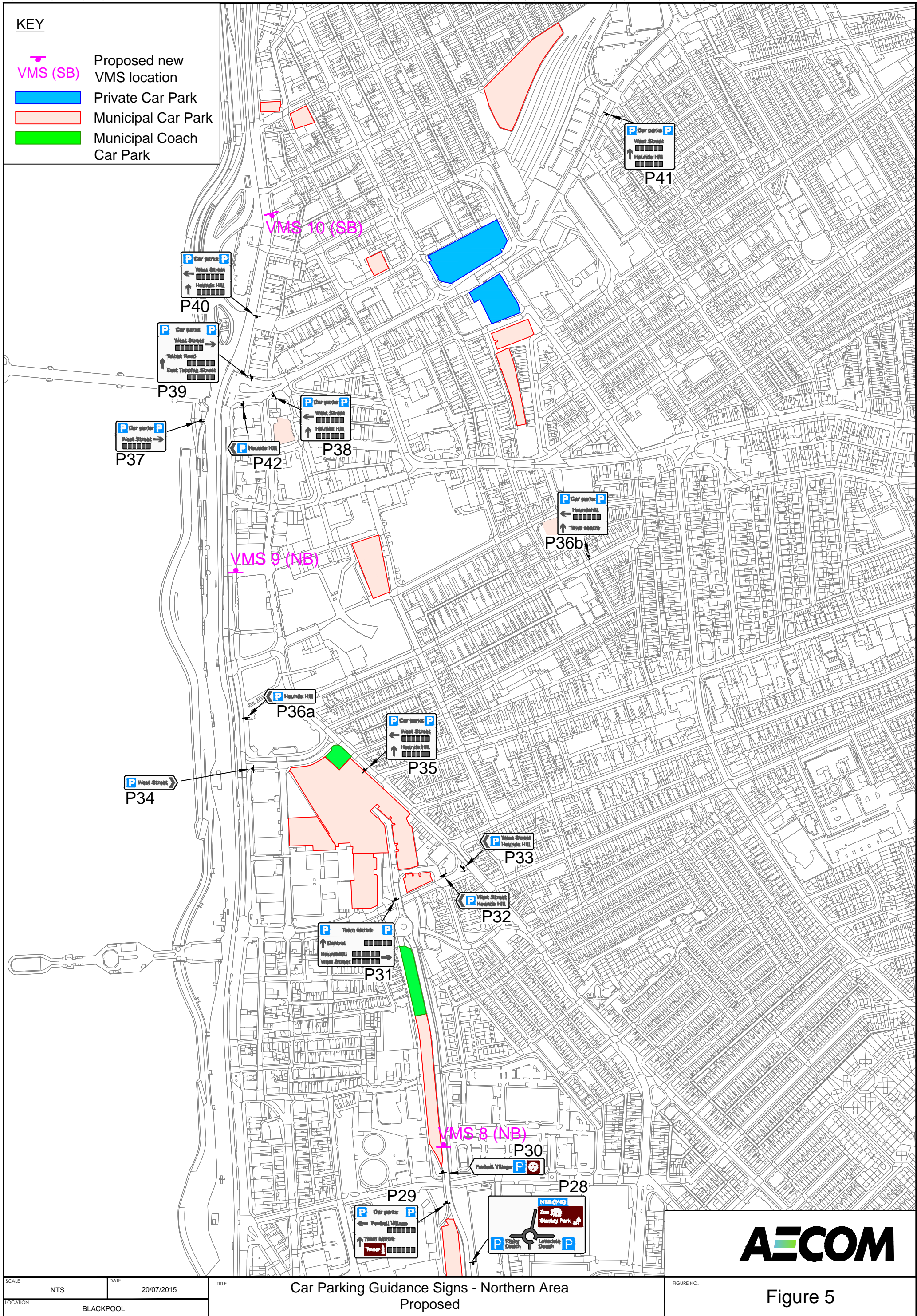
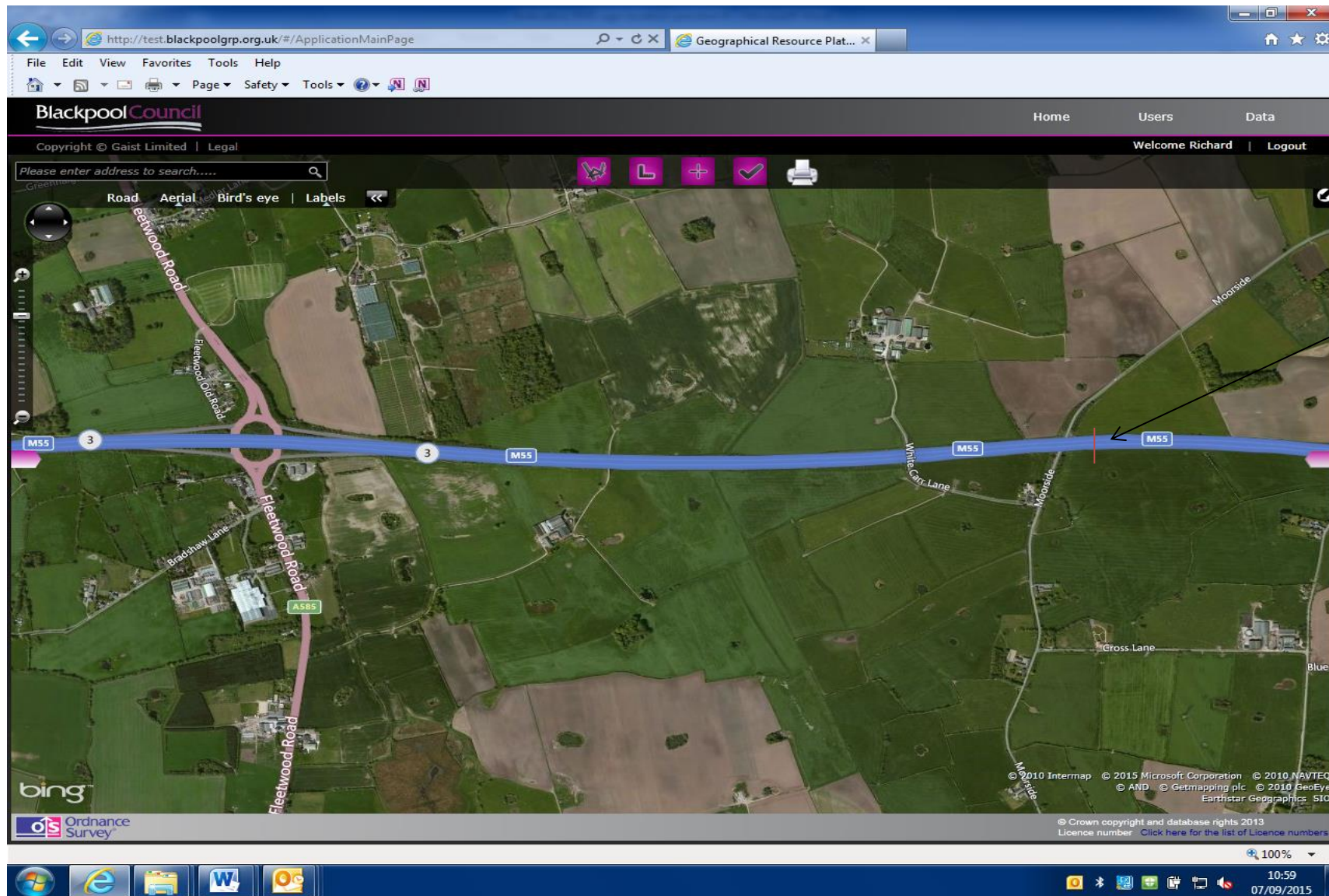


Client:  Blackpool Borough Council	Title:  Car Parking Guidance Signs Southern Area PROPOSED	<div></div> <div>3rd Floor, Princes Parade, Princes Dock, Liverpool, L3 1QH</div> <div>Tel: +44 (0) 151 331 8900 Fax: +44 (0) 151 331 8999 www.aecom.com</div>	Design: MF				CAD: MF				cm	
			Chk'd: AF				App'd: MA					
			Date: 20/07/2015				Scale: NTS					
Project: Blackpool Wayfinding Directional Signage			No. Figure 3								Rev:	
											A3	



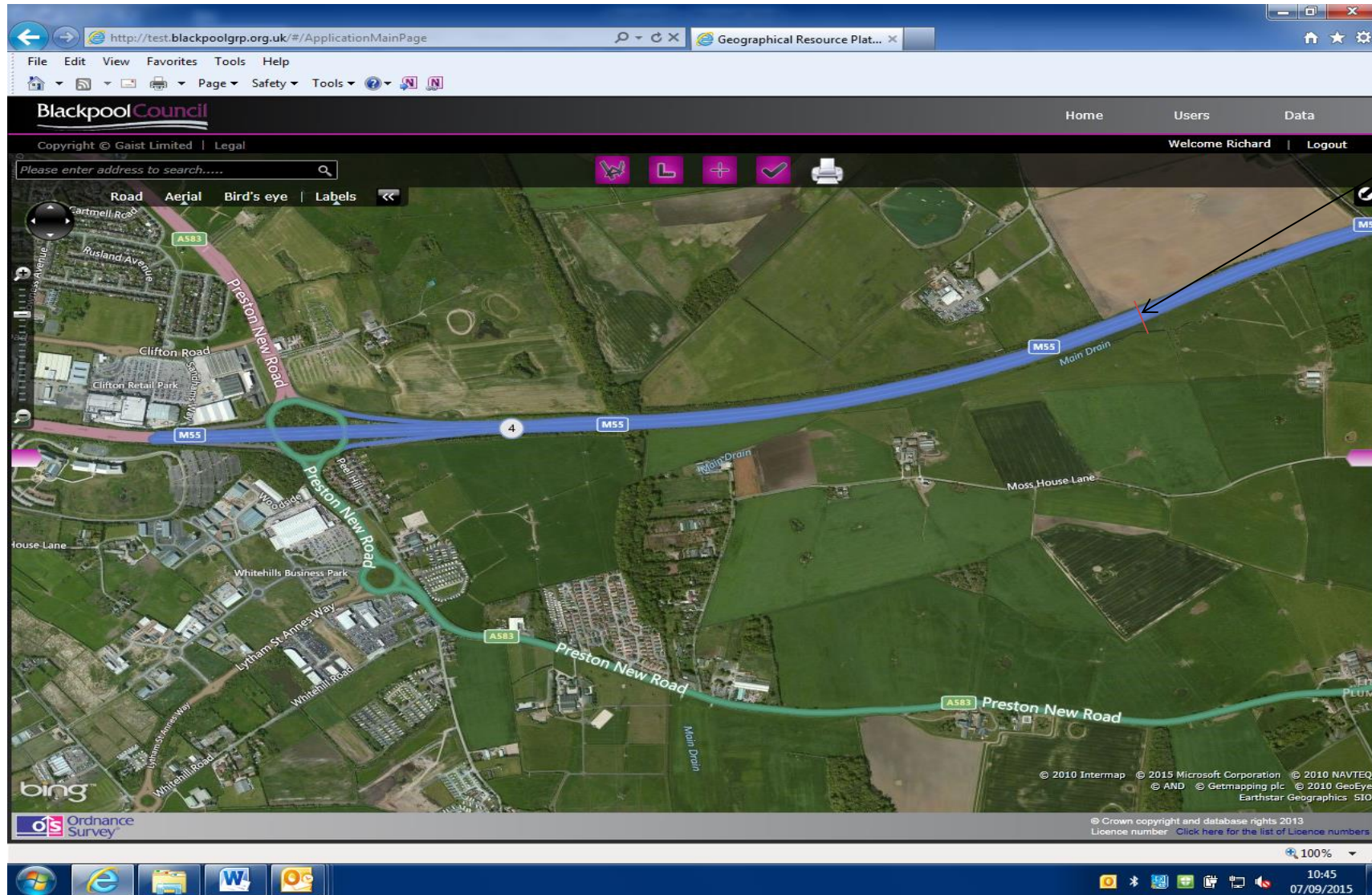


## M55 proposed VMS



Indicative  
location of  
VMS sign –  
200 metres in  
advance of the  
1 mile ADS  
sign

## M55 proposed VMS



Indicative location of VMS sign – 200 metres in advance of the 1 mile ADS sign.